

Introduction

This is the latest edition of our annual *Primary School Swimming in the Black Country* dataset, pulling together information from a range of sources including Key Stage 2 performance data and primary research conducted by Active Black Country and partners.

Key Stage 2 Swimming Measures

Schools should provide sufficient swimming opportunities to ensure all pupils make progress and achieve their very best in swimming and water safety. By all pupils this includes those with special educational needs, those with a disability or impairment and those whose first language is not English. The requirement is for all Year 6 pupils to meet the statutory minimum standard of capability and confidence in swimming and safe self-rescue, as set out in the national curriculum. The minimum requirement is that, by the time they are ready to leave Key Stage 2, every child is proficient across a number of key areas;

25m Proficiency



Every child, by the time they are ready to leave Key Stage 2 is able to swim confidently, competently and proficiently over a distance of at least 25m

Water Safety



Every Year 6 pupil should be able to demonstrate safe self-rescue and evidence this in different water-based situations.

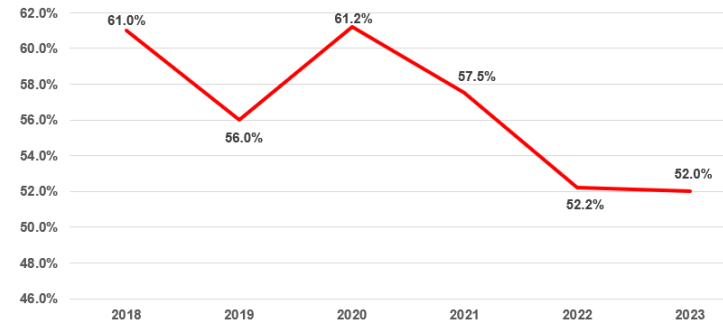
Pupils should also be able to demonstrably make choices about the strokes used to achieve different outcomes, evidence alternating and simultaneous strokes and adapt strokes for a range of outcomes. This dashboard will focus on the first two indicators

Active Black Country undertake desk-based research every year along with ongoing stakeholder engagement to collate information for all primary schools, providing us with a robust time-series dataset against which decisions can be made.

25m Proficiency



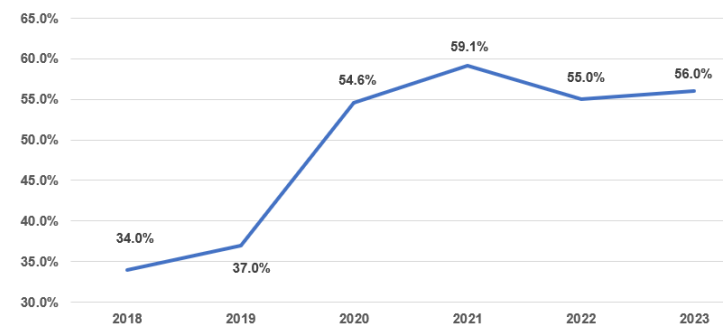
25m Proficiency in W'ton 2018-2023



Water Safety



Ability to Demonstrate Safe Self-Rescue in W'ton 2018-2023



% of Year 6 Pupils able to swim 25m

Wolverhampton **52%**

Black Country **51%**

The number of pupils leaving primary school in Wolverhampton who are able to swim 25m has remained relatively consistent over the last year, however it is still considerably lower than pre-covid levels.

Approximately half of all young people in the city are finishing Year 6 without this important ability, equating to approximately 1602 young people.

% of Year 6 Pupils able to perform safe self-rescue

Wolverhampton **56%**

Black Country **52%**

The proportion of Wolverhampton primary school leavers who have been able to demonstrate safe self-rescue has increased slightly over the last 12 months to 56%.

The 46% of this cohort who didn't meet this criteria accounts for approximately 1529 young people in the borough.

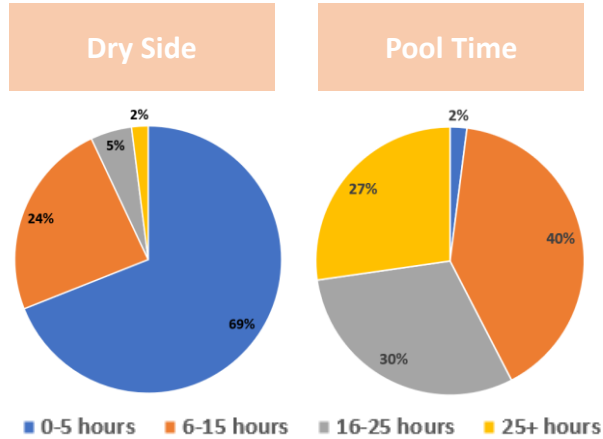
Further Insight



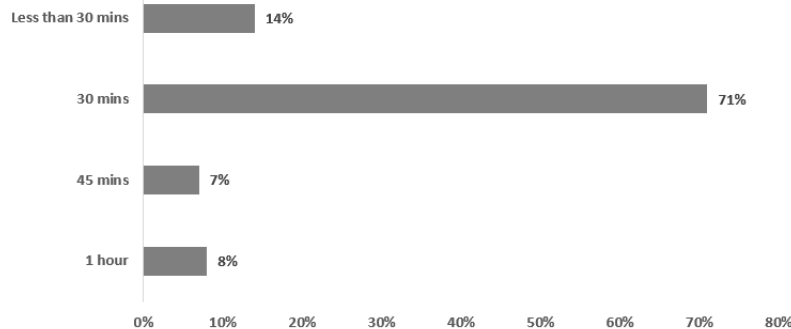
To supplement the Key Stage 2 swimming data, collated from information schools are required to publish on their websites, Active Black Country undertake an annual survey with primary schools to understand some of the context that underpins the numbers. This section provides a summary of the insight collated. **42** Wolverhampton Primary Schools provided responses.

Learn to Swim

In total, the majority of Wolverhampton schools (47%) do 16-25 hours of learn to swim whilst in Primary School, when taking into account dry side tuition and pool time



Average Length of Lessons



Year in which schools start swimming lessons



Yr R-2: **20%** Yr 3: **17%** Yr 4: **39%** Yr 5: **22%** Yr 6: **2%**

Top Up Swimming

57% of Wolverhampton Primary Schools intend to use PE and School Sport Premium funding for Top Up and Additional Swimming lessons. **19%** do not, whilst **24%** are undecided

Swimming Offer

76% of Wolverhampton Primary Schools would like to increase the amount of in-water swimming that they currently offer to pupils. **19%** want to increase dry-side learning

Teaching Staff

72% Use their teaching staff to support swimming instructors carry out lessons
24% use their own teachers to deliver swimming lessons

Good Practice

Training teachers has allowed smaller groups, which in turn has made better swimmers and more whole school involvement.

Our data will have a huge increase as our year 6 children are the first cohort to have 1 year of swimming and extra top up

Challenges

We need access to pools. This is where Wolverhampton is really weak.